



LTP2 FACTSHEET

GREATER MANCHESTER TRANSPORTATION UNIT

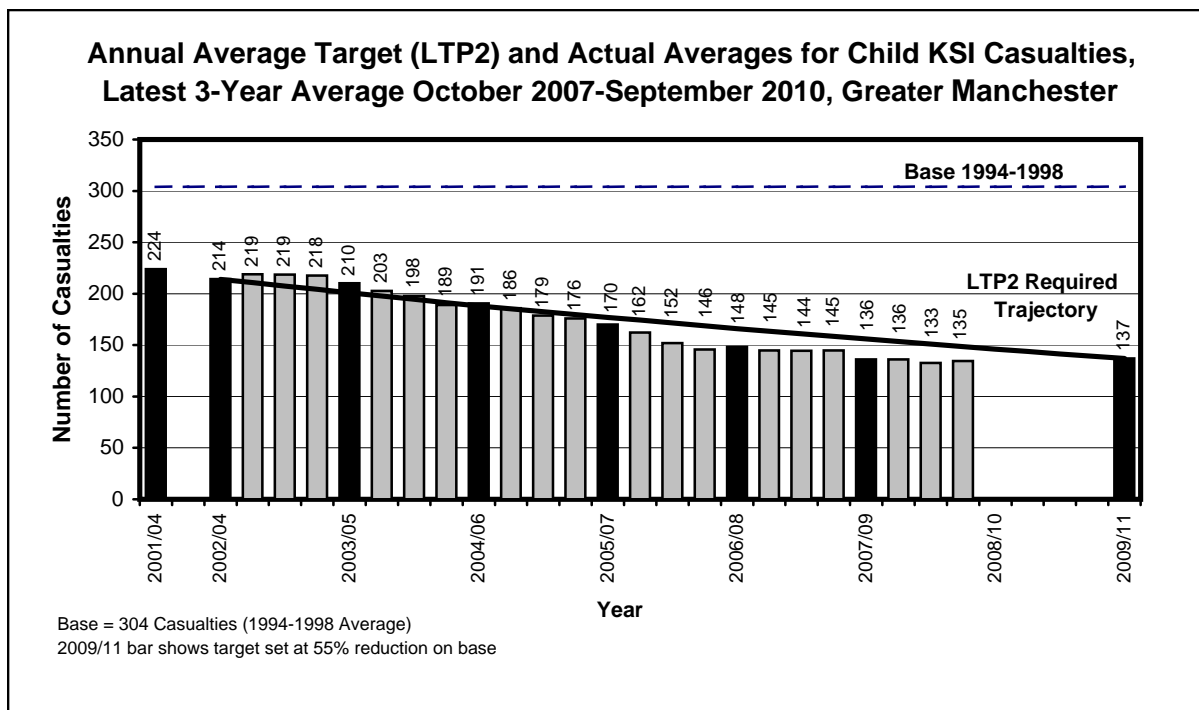
GREATER MANCHESTER CHILD KSI CASUALTY STATISTICS
October 2007 - September 2010

Child KSI Casualties: 55% casualty reduction on 1994-1998 baseline by 2010

Greater Manchester KSI Casualties, Latest 3-Year Average, from October 07 to September 10

Year	Annual Average		Index	
	Trajectory	Actual	Trajectory	Actual
1994-1998 baseline		304		100
2001-2004: baseline		224		74
2003: average 2002/2003/2004	214	214	70	70
2004: average 2003/2004/2005	201	210	66	69
2005: average 2004/2005/2006	188	191	62	63
2006: average 2005/2006/2007	177	170	58	56
2007: average 2006/2007/2008	166	148	55	49
2008: average 2007/2008/2009	156	136	51	45
<i>Average Apr 07-Mar 10</i>	<i>154</i>	<i>136</i>	<i>50</i>	<i>45</i>
<i>Average Jul 07-Jun 10</i>	<i>151</i>	<i>133</i>	<i>50</i>	<i>44</i>
<i>Average Oct 07-Sep 10</i>	<i>149</i>	<i>135</i>	<i>49</i>	<i>44</i>
2009: average 2008/2009/2010	146		48	
Target 2010: average 2009/2010/2011	137		45	

Note: The casualties for the target year will not be known until February/March 2012 (when the full 2011 data is available)





LTP2 FACTSHEET

GREATER MANCHESTER TRANSPORTATION UNIT

GREATER MANCHESTER KSI CASUALTY STATISTICS

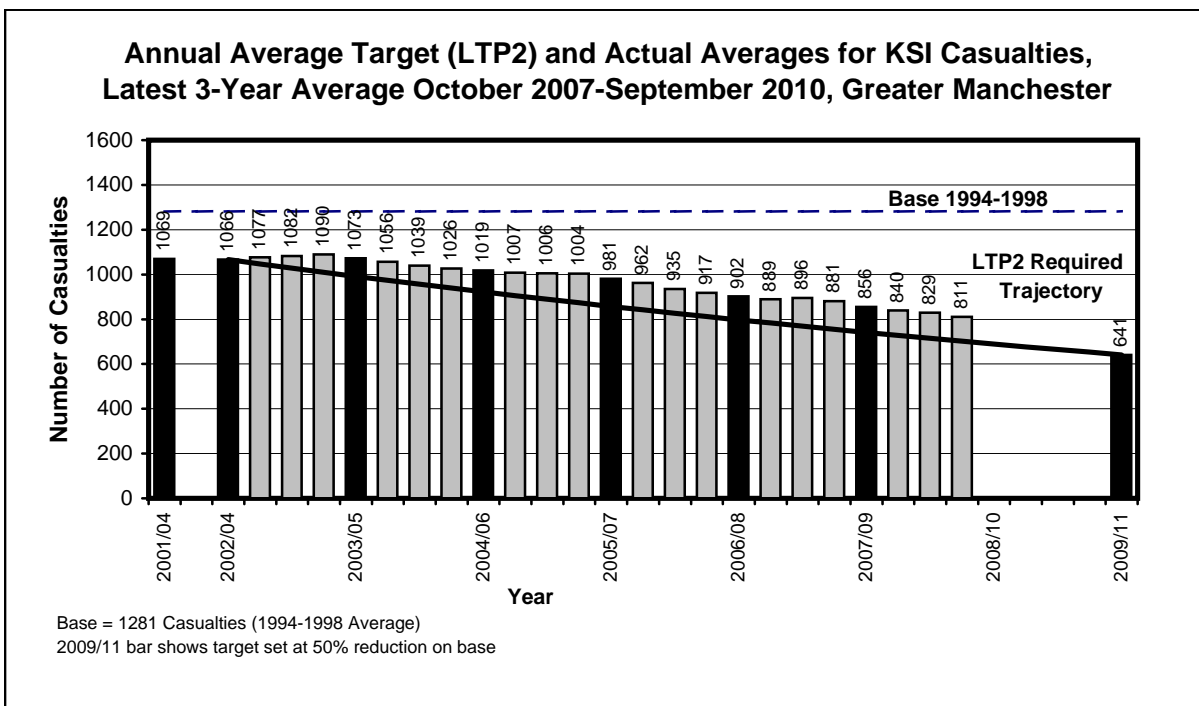
October 2007 - September 2010

KSI Casualties: 50% casualty reduction on 1994-1998 baseline by 2010

Greater Manchester KSI Casualties, Latest 3-Year Average, from October 07 to September 10

Year	Annual Average		Index	
	Trajectory	Actual	Trajectory	Actual
1994-1998 baseline		1281		100
2001-2004: baseline		1069		83
2003: average 2002/2003/2004	1066	1066	83	83
2004: average 2003/2004/2005	991	1073	77	84
2005: average 2004/2005/2006	922	1019	72	80
2006: average 2005/2006/2007	857	981	67	77
2007: average 2006/2007/2008	797	902	62	70
2008: average 2007/2008/2009	741	856	58	67
<i>Average Apr 07-Mar 10</i>	728	840	57	66
<i>Average Jul 07-Jun 10</i>	715	829	56	65
<i>Average Oct 07-Sep 10</i>	702	811	55	63
2009: average 2008/2009/2010	689		54	
Target 2010: average 2009/2010/2011	641		50	

Note: The casualties for the target year will not be known until February/March 2012 (when the full 2011 data is available)





LTP2 FACTSHEET

GREATER MANCHESTER TRANSPORTATION UNIT

GREATER MANCHESTER SLIGHTLY INJURED CASUALTY STATISTICS

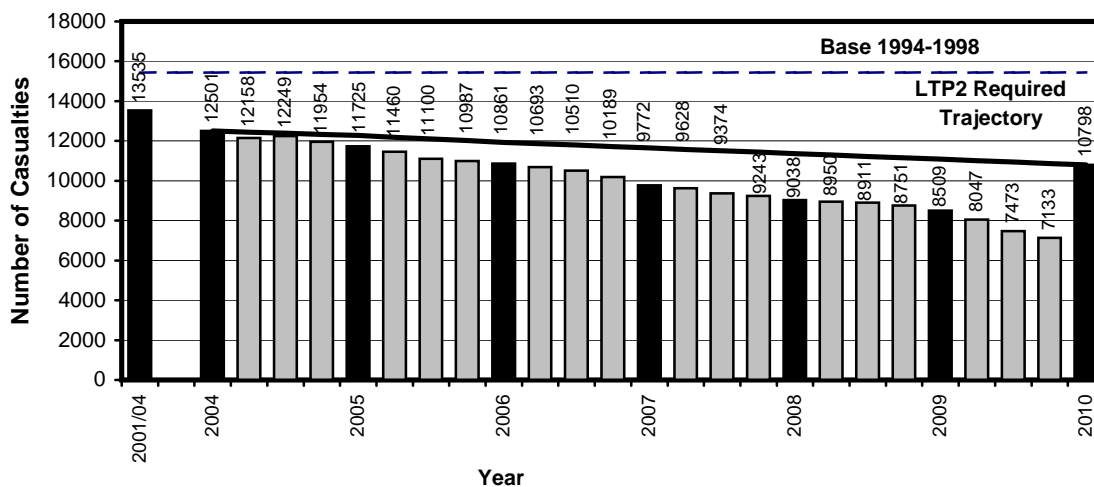
October 2009 - September 2010

Slight Casualties: 30% casualty reduction on 1994-1998 baseline by 2010

Greater Manchester Slight Casualties, Latest 12 Months, from October 09 to September 10

Target (LTP2) and Actual Numbers for Slight Casualties				
Year	Number		Index	
	Trajectory	Actual	Trajectory	Actual
1994-1998 baseline		15426		100
2001-2004: baseline		13535		88
2004	12501	12501	81	81
2005	12271	11725	80	76
2006	11933	10861	77	70
2007	11650	9772	76	63
2008	11366	9038	74	59
2009	11082	8509	72	55
<i>Apr 09-Mar 10</i>	<i>11011</i>	<i>8047</i>	<i>71</i>	<i>52</i>
<i>Jul 09-Jun 10</i>	<i>10940</i>	<i>7473</i>	<i>71</i>	<i>48</i>
<i>Oct 09-Sep 10</i>	<i>10869</i>	<i>7133</i>	<i>70</i>	<i>46</i>
Target 2010	10798		70	

**Target (LTP2) and Actual Numbers for Slight Casualties,
Latest 12 Months October 2009-September 2010, Greater Manchester**



Base = 15426 Casualties (1994-1998 Average)
2010 bar shows target set at 30% reduction on base

Progress Towards LTP2 Targets by District									
District	KSI			Child KSI			Slight		
	Base	Ave. Oct 07 to Sep 10	Target	Base	Ave. Oct 07 to Sep 10	Target	Base	Oct 09 to Sep 10	Target
Bolton	136	86	68	36	17	16	1537	743	1076
Bury	72	58	36	15	9	7	954	477	668
Manchester	294	186	147	71	31	32	3358	1900	2350
Oldham	109	72	54	29	17	13	1262	591	884
Rochdale	107	65	53	28	10	13	1209	528	846
Salford	126	78	63	25	10	11	1689	634	1182
Stockport	111	71	55	16	9	7	1483	598	1038
Tameside	106	56	53	31	12	14	1076	494	753
Trafford	74	53	37	18	6	8	1124	551	787
Wigan	147	86	73	37	15	17	1735	617	1214
Greater Manchester	1281	811	641	304	135	137	15426	7133	10798

Note: Base = Average 1994-1998

Index of Progress Towards LTP2 Targets by District									
District	KSI			Child KSI			Slight		
	Base	Ave. Oct 07 to Sep 10	Target	Base	Ave. Oct 07 to Sep 10	Target	Base	Oct 09 to Sep 10	Target
Bolton	100	63	50	100	48	45	100	48	70
Bury	100	80	50	100	57	45	100	50	70
Manchester	100	63	50	100	43	45	100	57	70
Oldham	100	66	50	100	58	45	100	47	70
Rochdale	100	61	50	100	35	45	100	44	70
Salford	100	62	50	100	39	45	100	38	70
Stockport	100	64	50	100	58	45	100	40	70
Tameside	100	53	50	100	40	45	100	46	70
Trafford	100	71	50	100	32	45	100	49	70
Wigan	100	59	50	100	41	45	100	36	70
Greater Manchester	100	63	50	100	44	45	100	46	70

Note: Base = Average 1994-1998 = 100

Greater Manchester Transportation Unit



PEDESTRIAN AND PEDAL CYCLE FACTSHEET

GREATER MANCHESTER PEDESTRIAN AND PEDAL CYCLE CASUALTY STATISTICS

October 08 - September 09, October 09 - September 10, Base

Greater Manchester Pedestrian Casualties by Road Class

October 08 - September 09, October 09 - September 10, Base

Road Class	Base ⁽¹⁾ Ave 1994-98	Oct 08 - Sep 09	Oct 09 - Sep 10	% Change (09 - 10/ 08 - 09)	% Change (09 - 10 /Base)
Motorway ⁽²⁾	6	4	3	-25.0	-50.0
A Class Roads ⁽³⁾	1160	576	531	-7.8	-54.2
B Class Roads	382	199	194	-2.5	-49.2
Minor Roads	1391	729	614	-15.8	-55.9
Non-Motorways	2933	1504	1339	-11.0	-54.3
Total	2939	1508	1342	-11.0	-54.3

Greater Manchester Pedal Cycle Casualties by Road Class

October 08 - September 09, October 09 - September 10, Base

Road Class	Base ⁽¹⁾ Ave 1994-98	Oct 08 - Sep 09	Oct 09 - Sep 10	% Change (09 - 10/ 08 - 09)	% Change (09 - 10 /Base)
Motorway ⁽²⁾	2	0	0	-(4)	-(4)
A Class Roads ⁽³⁾	446	337	354	5.0	-20.6
B Class Roads	163	123	107	-13.0	-34.4
Minor Roads	576	299	284	-5.0	-50.7
Non-Motorways	1186	759	745	-1.8	-37.2
Total	1188	759	745	-1.8	-37.3

Notes :-

1. Base figures are rounded to the nearest whole number
2. Motorways include the A627(M) but exclude A57(M) and A6144(M). The A6144(M) was reclassified as A6144 on 24 May 2006
3. A Roads include A(M) and A(T) roads except A627(M)
4. Casualty numbers too small to make % changes meaningful

RUNNING ANNUAL TOTALS - ROAD CASUALTIES

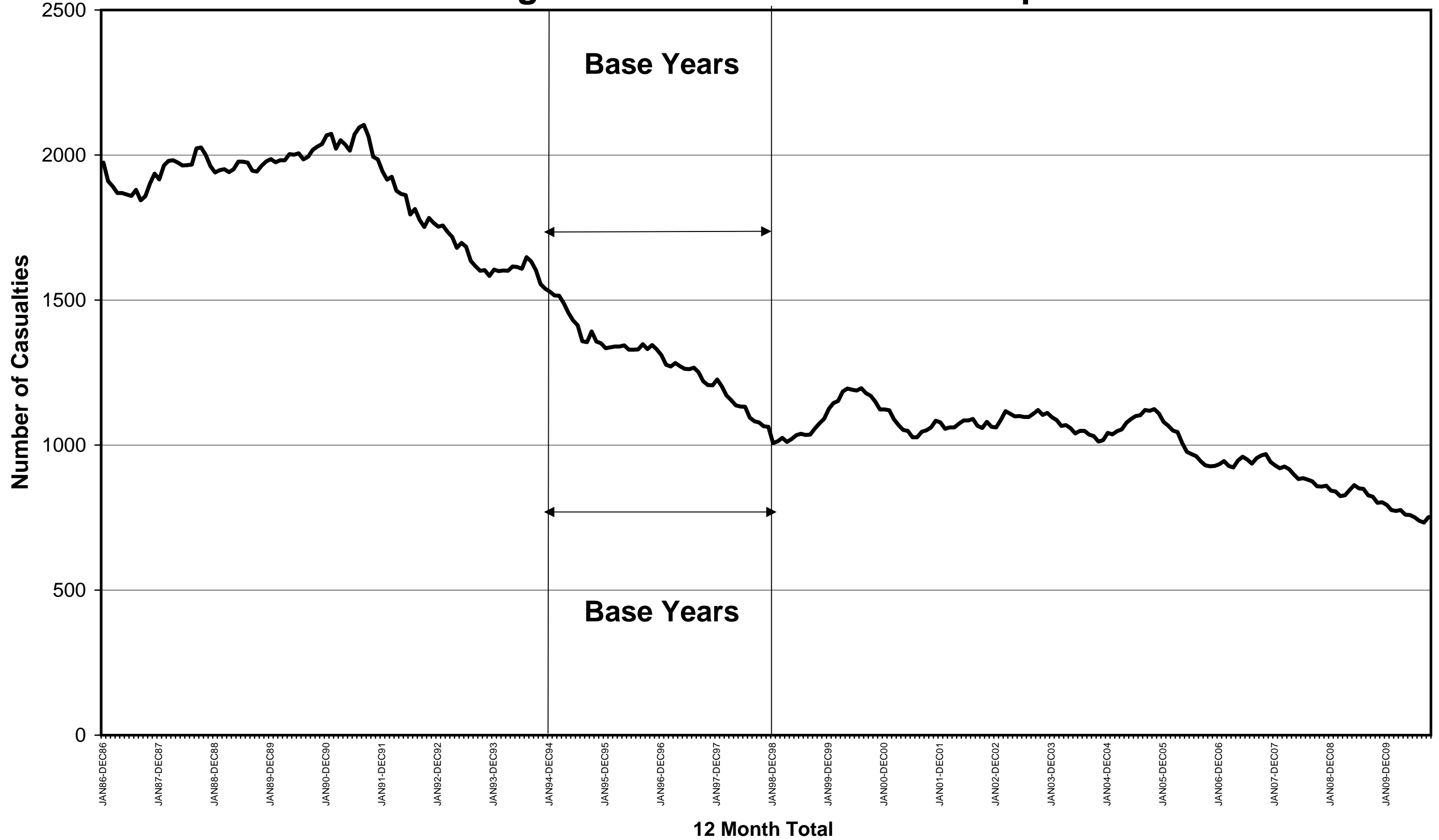
Greater Manchester Running Annual Casualty Totals 2008 to 2010													
12 Month Total	Oct 08 - Sep 09	Nov 08 - Oct 09	Dec 08 - Nov 09	Jan 09 - Dec 09	Feb 09 - Jan 10	Mar 09 - Feb 10	Apr 09 - Mar 10	May 09 - Apr 10	Jun 09 - May 10	Jul 09 - Jun 10	Aug 09 - Jul 10	Sep 09 - Aug 10	Oct 09 - Sep 10
Casualty Severity													
Killed	72	75	72	73	64	65	63	60	62	59	59	56	53
Serious	750	726	731	721	712	708	713	700	697	692	680	677	699
Slight	8751	8641	8596	8509	8205	8180	8047	7901	7626	7471	7303	7203	7133
Total	9573	9442	9399	9303	8981	8953	8823	8661	8385	8222	8042	7936	7885
KSI	822	801	803	794	776	773	776	760	759	751	739	733	752
Casualty Class													
Pedestrians	1508	1462	1460	1436	1381	1378	1360	1373	1353	1357	1332	1307	1342
Pedal Cyclists	759	774	766	752	736	731	720	727	738	736	734	733	745
Motor Cyclists	544	527	524	518	501	505	498	484	487	496	504	515	506
Car Users	6178	6104	6095	6059	5846	5829	5755	5601	5351	5191	5032	4934	4855
Others	584	575	554	538	517	510	490	476	456	442	440	447	437
Total	9573	9442	9399	9303	8981	8953	8823	8661	8385	8222	8042	7936	7885
Child (0-15) Casualty Severity													
Killed	6	7	7	6	5	5	5	5	5	4	4	3	4
Serious	140	131	124	123	123	125	131	124	127	120	118	119	124
Slight	1087	1069	1073	1072	1044	1031	1017	1020	1009	979	972	949	954
Total	1233	1207	1204	1201	1172	1161	1153	1149	1141	1103	1094	1071	1082
KSI	146	138	131	129	128	130	136	129	132	124	122	122	128

Notes: Car – From 1/4/99 this definition was revised to exclude invalid tricycles and motor caravans.
 KSI – Killed and Seriously Injured

Greater Manchester Running Annual Casualty Totals 2008 to 2010													
12 Month Total	Oct 08 - Sep 09	Nov 08 - Oct 09	Dec 08 - Nov 09	Jan 09 - Dec 09	Feb 09 - Jan 10	Mar 09 - Feb 10	Apr 09 - Mar 10	May 09 - Apr 10	Jun 09 - May 10	Jul 09 - Jun 10	Aug 09 - Jul 10	Sep 09 - Aug 10	Oct 09 - Sep 10
District: Casualties													
Bolton: Killed	12	13	12	11	8	7	9	9	8	8	8	7	6
Bolton: Serious	62	60	63	66	62	67	67	70	70	70	75	81	85
Bolton: Slight	923	940	922	920	881	880	883	834	815	809	771	758	743
Bolton: Total	997	1013	997	997	951	954	959	913	893	887	854	846	834
Bury: Killed	3	3	3	3	2	2	4	4	6	5	5	4	4
Bury: Serious	59	61	61	63	66	61	68	69	70	70	64	61	55
Bury: Slight	641	626	631	635	626	626	610	609	578	544	502	507	477
Bury: Total	703	690	695	701	694	689	682	682	654	619	571	572	536
Manchester: Killed	13	14	13	13	12	14	13	11	12	11	11	10	11
Manchester: Serious	187	178	184	174	173	168	169	166	157	148	147	144	154
Manchester: Slight	2268	2244	2251	2217	2115	2111	2117	2072	1978	1936	1917	1863	1900
Manchester: Total	2468	2436	2448	2404	2300	2293	2299	2249	2147	2095	2075	2017	2065
Oldham: Killed	13	13	10	11	11	11	10	11	12	11	10	11	8
Oldham: Serious	59	57	56	57	60	63	56	57	60	67	68	74	75
Oldham: Slight	670	660	646	627	625	617	607	612	615	630	608	595	591
Oldham: Total	742	730	712	695	696	691	673	680	687	708	686	680	674
Rochdale: Killed	3	3	3	2	1	1	0	0	0	0	0	0	0
Rochdale: Serious	67	59	55	54	57	57	57	51	52	49	48	45	46
Rochdale: Slight	667	639	644	641	620	619	607	582	557	510	524	542	528
Rochdale: Total	737	701	702	697	678	677	664	633	609	559	572	587	574
Salford: Killed	4	5	6	6	5	5	5	5	5	4	4	4	4
Salford: Serious	75	68	66	65	60	64	66	65	68	65	59	52	58
Salford: Slight	890	883	858	848	813	810	793	769	715	698	679	655	634
Salford: Total	969	956	930	919	878	879	864	839	788	767	742	711	696
Stockport: Killed	7	6	6	7	7	7	6	6	5	7	6	6	6
Stockport: Serious	58	59	58	64	66	60	63	63	61	63	59	62	59
Stockport: Slight	640	626	634	645	631	633	607	611	617	617	606	601	598
Stockport: Total	705	691	698	716	704	700	676	680	683	687	671	669	663
Tameside: Killed	4	4	4	4	4	5	4	2	3	3	4	5	4
Tameside: Serious	49	48	48	45	45	47	50	50	50	52	51	51	53
Tameside: Slight	622	601	617	614	588	574	566	572	543	546	527	508	494
Tameside: Total	675	653	669	663	637	626	620	624	596	601	582	564	551
Trafford: Killed	3	5	5	6	5	5	5	5	4	4	4	3	3
Trafford: Serious	50	48	49	46	44	46	44	49	47	47	49	48	51
Trafford: Slight	601	588	576	569	562	570	564	571	561	540	546	549	551
Trafford: Total	654	641	630	621	611	621	613	625	612	591	599	600	605
Wigan: Killed	10	9	10	10	9	8	7	7	7	6	7	6	7
Wigan: Serious	84	88	91	87	79	75	73	60	62	61	60	59	63
Wigan: Slight	829	834	817	793	744	740	693	669	647	641	623	625	617
Wigan: Total	923	931	918	890	832	823	773	736	716	708	690	690	687
Total	9573	9442	9399	9303	8981	8953	8823	8661	8385	8222	8042	7936	7885

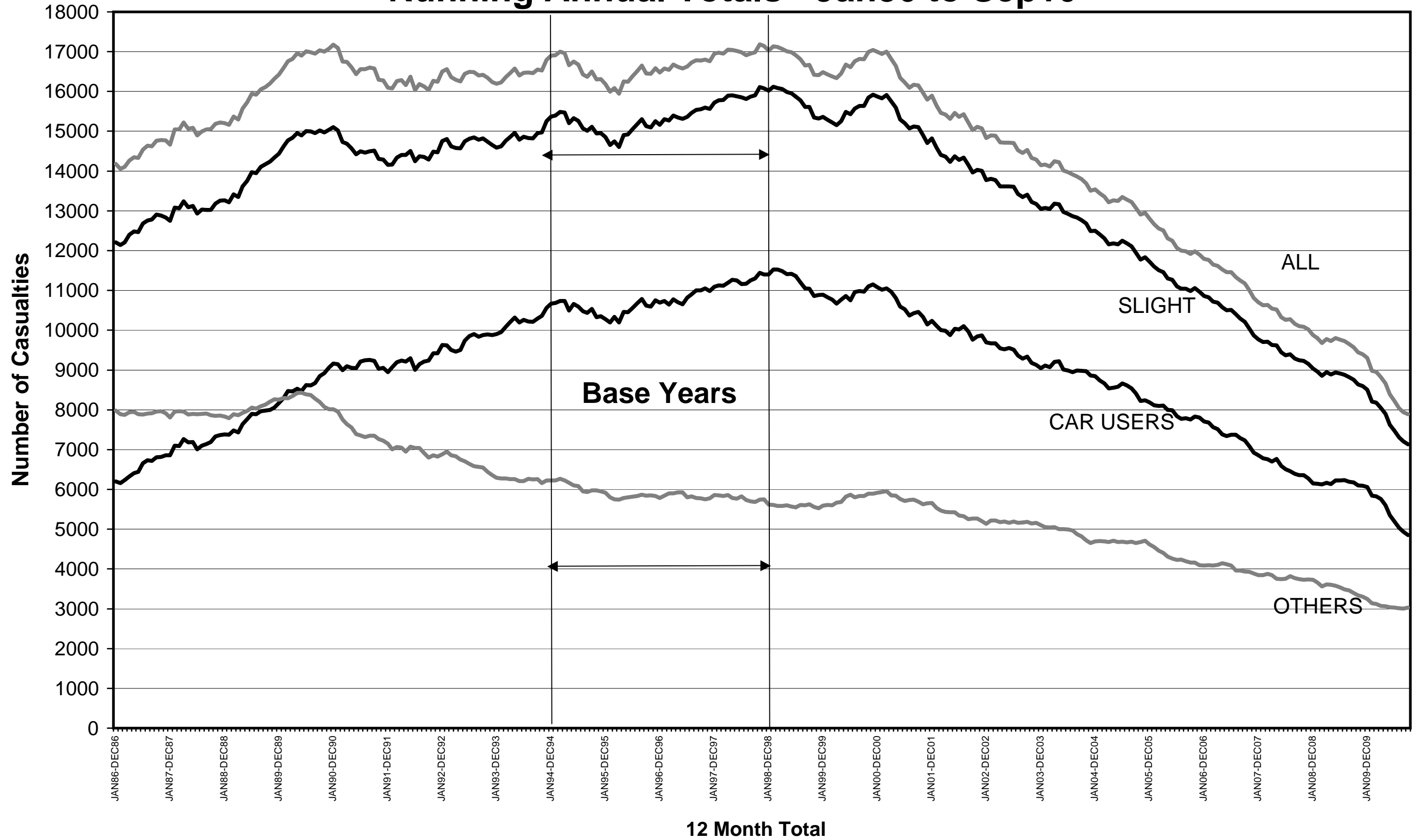
Greater Manchester Killed & Seriously Injured Casualties

Running Annual Totals - Jan86 to Sep10



Greater Manchester Casualties by Casualty Class

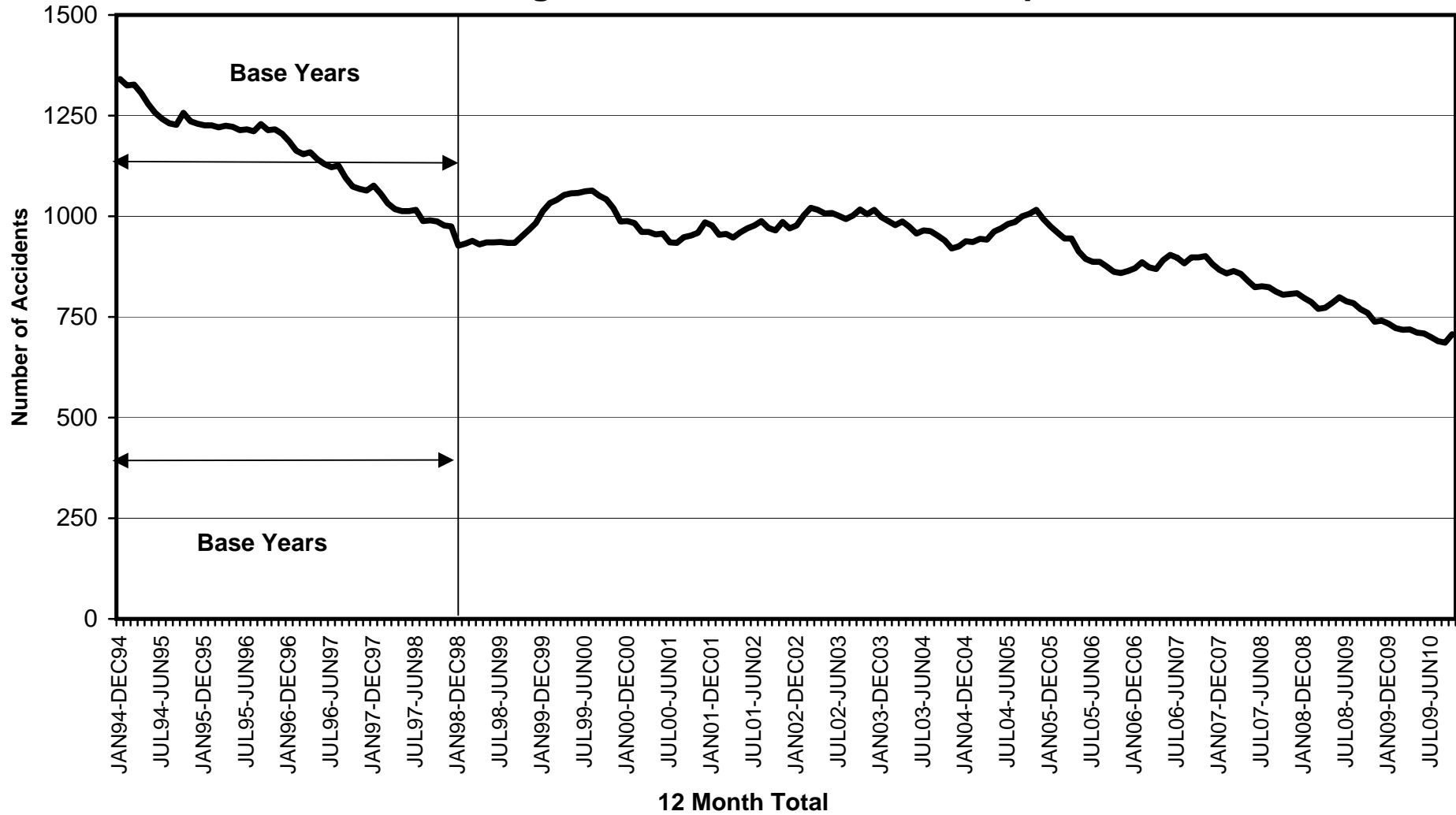
Running Annual Totals - Jan86 to Sep10



RUNNING ANNUAL TOTALS – ROAD ACCIDENTS

Greater Manchester Running Annual Accident Totals 2008 to 2010													
12 Month Total	Oct 08 - Sep 09	Nov 08 - Oct 09	Dec 08 - Nov 09	Jan 09 - Dec 09	Feb 09 - Jan 10	Mar 09 - Feb 10	Apr 09 - Mar 10	May 09 - Apr 10	Jun 09 - May 10	Jul 09 - Jun 10	Aug 09 - Jul 10	Sep 09 - Aug 10	Oct 09 - Sep 10
Accident Severity													
Killed	67	69	68	69	61	62	60	57	59	56	56	52	51
Serious	693	669	673	664	661	656	659	654	650	644	634	634	656
Slight	5933	5856	5843	5777	5578	5559	5459	5398	5257	5178	5068	4999	4952
Total	6693	6594	6584	6510	6300	6277	6178	6109	5966	5878	5758	5685	5659
District: Accidents													
Bolton: Killed	10	11	10	9	7	6	8	8	7	7	7	6	6
Bolton: Serious	56	54	55	58	56	61	61	64	65	65	71	74	78
Bolton: Slight	600	595	589	585	561	556	551	540	534	541	519	517	510
Bolton: Total	666	660	654	652	624	623	620	612	606	613	597	597	594
Bury: Killed	3	3	3	3	2	2	4	4	6	5	5	4	4
Bury: Serious	56	58	58	61	64	59	65	67	67	67	62	59	53
Bury: Slight	404	397	402	400	391	396	383	380	370	350	330	340	335
Bury: Total	463	458	463	464	457	457	452	451	443	422	397	403	392
Manchester: Killed	13	14	13	13	12	14	13	11	12	11	11	10	11
Manchester: Serious	176	165	171	162	161	157	158	158	149	142	142	139	148
Manchester: Slight	1559	1537	1551	1532	1469	1474	1466	1446	1400	1396	1384	1341	1339
Manchester: Total	1748	1716	1735	1707	1642	1645	1637	1615	1561	1549	1537	1490	1498
Oldham: Killed	10	10	9	10	10	10	9	10	11	10	9	9	7
Oldham: Serious	51	49	50	51	53	56	49	50	51	57	56	62	67
Oldham: Slight	423	420	419	410	405	397	393	403	402	405	385	383	375
Oldham: Total	484	479	478	471	468	463	451	463	464	472	450	454	449
Rochdale: Killed	3	3	3	2	1	1	0	0	0	0	0	0	0
Rochdale: Serious	65	56	52	51	54	53	53	47	48	44	43	40	41
Rochdale: Slight	443	431	434	428	407	410	397	387	377	348	357	358	354
Rochdale: Total	511	490	489	481	462	464	450	434	425	392	400	398	395
Salford: Killed	4	5	6	6	5	5	5	5	5	4	4	4	4
Salford: Serious	66	60	58	57	54	58	59	59	62	59	53	51	57
Salford: Slight	587	593	579	565	546	541	531	521	499	485	481	469	457
Salford: Total	657	658	643	628	605	604	595	585	566	548	538	524	518
Stockport: Killed	7	6	6	7	7	7	6	6	5	7	6	6	6
Stockport: Serious	56	57	55	61	63	58	60	60	58	59	56	59	56
Stockport: Slight	484	472	473	479	465	459	441	448	450	449	446	442	439
Stockport: Total	547	535	534	547	535	524	507	514	513	515	508	507	501
Tameside: Killed	4	4	4	4	4	5	4	2	3	3	4	5	4
Tameside: Serious	46	45	46	42	42	43	45	44	46	48	47	47	47
Tameside: Slight	422	404	408	408	397	387	388	385	368	367	346	336	330
Tameside: Total	472	453	458	454	443	435	437	431	417	418	397	388	381
Trafford: Killed	3	4	4	5	4	4	4	4	3	3	3	2	2
Trafford: Serious	48	47	48	45	44	45	43	47	45	45	47	46	48
Trafford: Slight	443	439	433	432	425	428	420	419	404	383	383	379	379
Trafford: Total	494	490	485	482	473	477	467	470	452	431	433	427	429
Wigan: Killed	10	9	10	10	9	8	7	7	7	6	7	6	7
Wigan: Serious	73	78	80	76	70	66	66	58	59	58	57	57	61
Wigan: Slight	568	568	555	538	512	511	489	469	453	454	437	434	434
Wigan: Total	651	655	645	624	591	585	562	534	519	518	501	497	502
Total	6693	6594	6584	6510	6300	6277	6178	6109	5966	5878	5758	5685	5659

Greater Manchester Killed & Seriously Injured Accidents Running Annual Totals - Jan94 to Sep10



Greater Manchester Slight Accidents Running Annual Totals - Jan94 to Sep10

